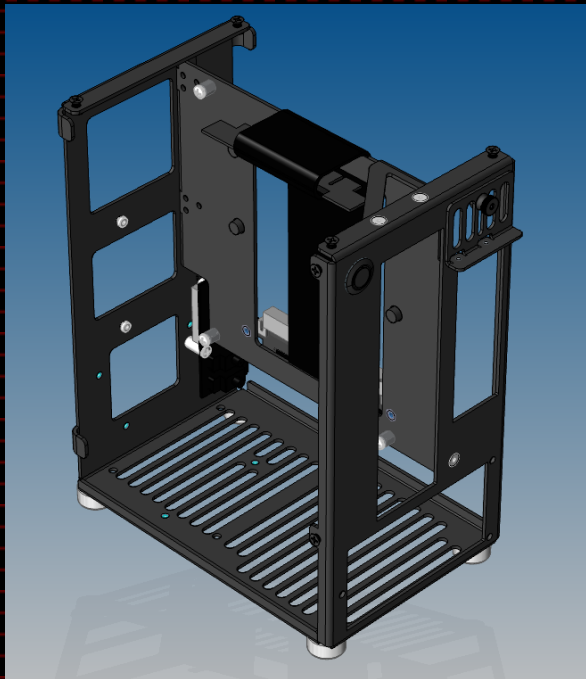
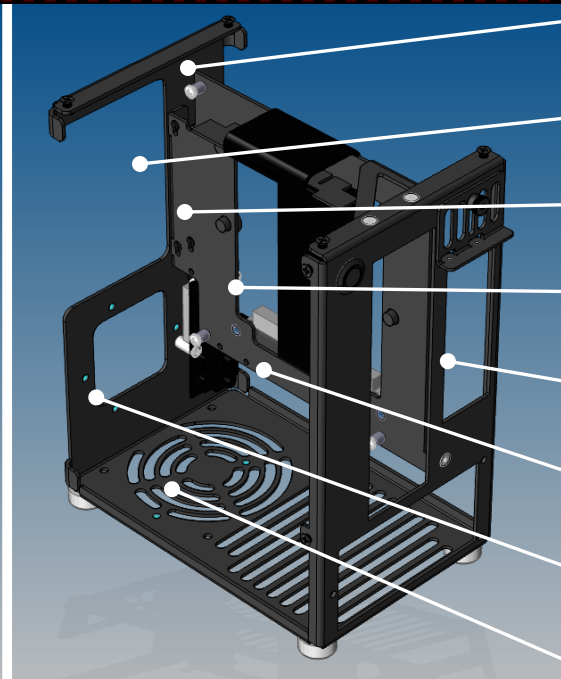


# MI-6 SECOND EDITION CHANGES AND IMPROVEMENTS



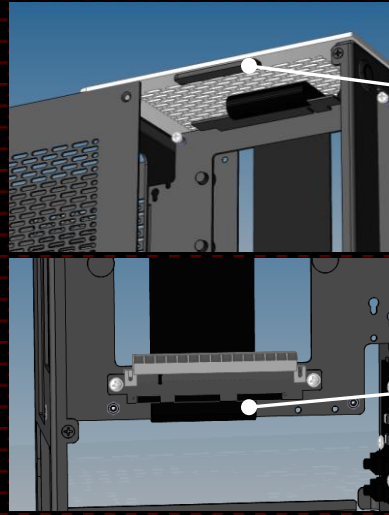
FIRST EDITION



SECOND EDITION

- OPENING FOR H2O COOLING TUBING ROUTING
- OPEN FRONT FOR EASY ACCESS TO COMPONENTS
- KEYHOLE SLOTS FOR SIMPLE SSD MOUNTING
- LARGER CUTOUT FOR MB BACKPLANE AND M.2 ACCESS
- LARGER PCI CUTOUT FOR OVERSIZE CONNECTORS
- ADDED HOLES FOR ZIPTIE CABLE MGMT
- SSD MOUNTING LOCATIONS REDUCED FROM 7 TO 5
- CIRCULAR VENT PATTERN FOR LESS 92MM FAN NOISE

# MI-6 SECOND EDITION CHANGES AND IMPROVEMENTS



3mm ALUMINUM  
COVER SUPPORT TO  
PREVENT FLEX

REVISED PCI-E RISER  
POSITION TO ENSURE  
GPU FIT TO PCI-E



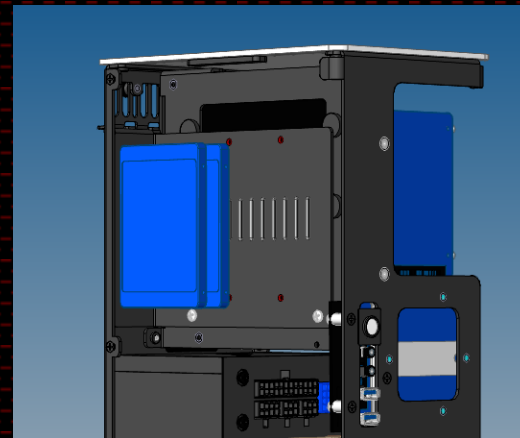
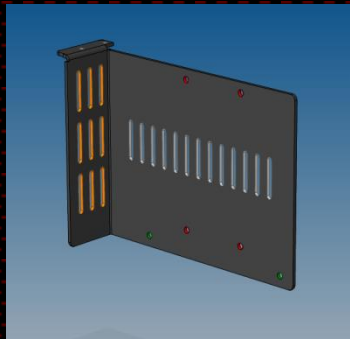
TOP PLATE IN NATURAL  
BRUSHED ALUMINUM OR BLACK  
POWDER COAT MATCHING THE  
COVER



# MI-6 NEW OPTIONAL ACCESSORIES

## HDD MOUNT IN PLACE OF GPU

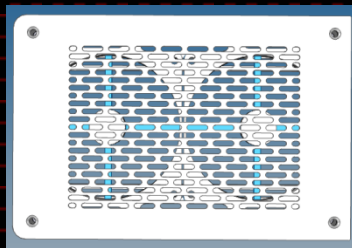
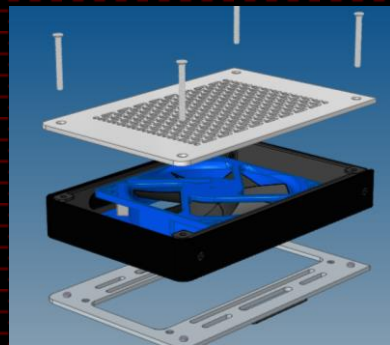
- FOR 1 3.5 HDD OR
- 2 ADDITIONAL 2.5 HDDs



# MI-6 NEW OPTIONAL ACCESSORIES

## SHORT LOFT

- 28MM INTERNAL HT
- 1@120MM OR 2@92MM FANS



## TALL LOFT

- 57MM INTERNAL HT
- FOR 120MM AIO LIQUID COOLER

